

MEDIX MD-04

3/5 STEP SLIT LAMP (HALOGEN/LED ILLUMINATION)



- Model A: MEDIX MD-04 HS - 3 Step (Haag-Striet Type-Halogen Tower Illumination, Wooden Top/Metal Plate)
- Model B: MEDIX MD-04 HS - 3 Step (Haag-Striet Type-Led Tower Illumination, Wooden Top/Metal Plate)
- Model C: MEDIX MD-04 HS - 5 Step (Haag-Striet Type-Halogen Tower Illumination, Wooden Top/Metal Plate)
- Model D: MEDIX MD-04 HS - 5 Step (Haag-Striet Type-Led Tower Illumination, Wooden Top/Metal Plate)



- Model E: MEDIX MD-04 Z - 3 Step (Zeiss Type-Halogen Lower Illumination, Wooden Top/Metal Plate)
- Model F: MEDIX MD-04 Z - 3 Step (Zeiss Type-Led Lower Illumination, Wooden Top/Metal Plate)
- Model G: MEDIX MD-04 Z - 5 Step (Zeiss Type-Halogen Lower Illumination, Wooden Top/Metal Plate)
- Model H: MEDIX MD-04 Z - 5 Step (Zeiss Type-Led Lower Illumination, Wooden Top/Metal Plate)

MD-04 HS

The MEDIX MD-04 HS (H)/(L) delivers ultimate value with a well-designed 3/5 step optical system, German Apochromatic Optics (These Optics Are Antifungal, Anti-Fog And Scratch Resistant, In Addition To Producing True-To-Life Resolution) Provide Clearest View, Crisp And Details Of Anterior And Posterior Segment Of Patient's Eye. All Optics Are Lead Free And All Paints Used Have Antimicrobial Additives That Prevent The Growth Of Bacteria On Contact Surfaces, Ensuring A Healthier Working Environment. All Parts In Contact With Patient Are Antitoxic And Anti-Irritation and an efficient Halogen/Led illumination system providing a tilting, rotating slit important for good posterior segment observation, ensuring best details in diagnosis from cornea to retina.



MD-04 Z

The MEDIX MD-04 Z (H)/(L) with a well-designed 3/5 step optical system, German Apochromatic Optics (These Optics Are Antifungal, Anti-Fog And Scratch Resistant, In Addition To Producing True-To-Life Resolution) Provide Clearest View, Crisp And Details Of Anterior And Posterior Segment Of Patient's Eye. All Optics Are Lead Free And All Paints Used Have Antimicrobial Additives That Prevent The Growth Of Bacteria On Contact Surfaces, Ensuring A Healthier Working Environment. All Parts In Contact With Patient Are Antitoxic And Anti-Irritation and an efficient Halogen/Led illumination system is an agile system that puts diagnostic essentials at the fingertips of eye care professionals. This slit lamp provides a more compact illumination system. This ensures that Zeiss type design provide doctors with greater space efficiency and affordable slit lamp.



TECHNICAL SPECIFICATION

MD-04 Z

MD-04 HS

Microscope	Galilean	Galilean
Magnification	5 step: 6.5X, 10X, 16X, 25X, 40X 3 step: 10X, 16X, 25X	5 step: 6.5X, 10X, 16X, 25X, 40X 3 step: 10X, 16X, 25X
Eyepieces	WF 12.5X/18 mm, diopter adj. \pm 5 mm	WF 12.5X/18 mm, diopter adj. \pm 5 mm
IPD range	48.5 - 77 mm	48.5 - 77 mm
Slit length/width	0 - 13.5 mm	0 - 12 mm
Slit apertures	0.6, 5.8, 9, 13.5 mm and continuous 1.5 to 12.0 mm	0.3, 1, 3, 5, 9, 12 mm and continuous 1.5 to 12.0 mm
Slit rotation	0 - 180°	0 - 180°
Slit tilt	-	20° (in steps, 0°, 5°, 10°, 15°, 20°)
Filters	Green, Cobalt blue, Heat absorbing	Red free, Cobalt blue, Heat absorbing, Neutral density, Yellow filter (wratten) (5-step)
Longitudinal (in/out)	100 mm	100 mm
Lateral (left /right)	107 mm	107 mm
Vertical (up/down)	30 mm	30 mm
Chin rest range	80 mm	80 mm
Illumination	6V 20W Halogen/5W Led	6V 20W Halogen/5W Led
Table base	Metal Plate/Wooden Top	Metal Plate /Wooden Top
Weight	25 kg (packed)	24 kg (packed)
Optional accessories	Tonometer, Beam splitter with Cameras, DSLR Camera Attachment, Diffuser, Motorized table	Tonometer, Beam splitter with Cameras, DSLR Camera Attachment, Diffuser, Motorized table

OPTIONAL ACCESSORIES

Combo - 1



DBS-MS



CA-DSLR



DSLR CAMERA
(CANON/NIKON/SONY)

Double Beam Splitter With C-Mount for Dslr Camera for Slit Lamp
Medix Double Beam Splitter **Model»DBS-MS**For Slit Lamp with (80/20) & (50/50) Option Superior German Optics. Excellent Work with Many Models of Zeiss, Topcon, Takagi. Medix C Mount(Camera Attachment)
Model»CA-DSLRFor Dslr Camera-Sony/Nikon/Canon(optional) With Superior German Optics. (Before Order, Please Specify Camera Details).

Combo - 2



DBS-MS



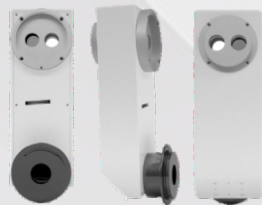
MCA-IP



I-PHONE (6 OR ABOVE)

Double Beam Splitter With C-Mount for I-Phone Attachment for Slit Lamp
Medix Double Beam Splitter **Model»DBS-MS**For Slit Lamp with (80/20) & (50/50) Option Superior German Optics. Excellent Work with Many Models of Zeiss, Topcon, Takagi. Medix C Mount(I-Phone Attachment)
Model»MCA-IPFor I-Phone Attachment (Mobile-optional) With Superior German Optics. (Before Order, Please Specify Camera Details).

Combo - 3



DSLR-SL



DSLR CAMERA - CANNON

Integrated Beam Splitter and DSLR Camera Adapte for Slit Lamp
Medix Integrated Beam Splitter and DSLR Camera Adapter for Slite Lamps **Model»DBS-MS**For CANON Dslr Camera Superior German Optics. Excellent Work with Many Models of Topcon, Takagi.(Before Order, Please Specify Camera Details).

Combo - 4



SBS-90



MVIEW300

Beam Splitter and In-built C-Mount CCD Adapter with Full Hd Camera for Slit Lamp
Medix Beam Splitter and In-built C-Mount CCD Adapter **Model»SBS-90**For Slit Lamp, focus Controlled By Manual Ring, Superior German Optics. Excellent Work with Many Models of Topcon, Takagi.
Medix Full-Hd 21mp Camera **Model»MVIEW-300** With Build In Tf Card Recording System With HDMI And USB Output Full Hd 21 Megapixel Panasonic Cmos Image Sensor, Hdmi 1920*1080p 60Frame Output, Usb 2.0 1920*1080p 30 Frame Output, 4k Video Recording, 21 Megapixel Photos, Photo Size 4608*3456, Freezing/Defrosting Function, Electronic Zoom, Support Tf Card Storage, Maximum Support Of 64gb, The Remote Control Operation, Lens Interface-C/Cs.

Combo - 5



SBS-35



MVIEW300

Beam Splitter and In-built C-Mount CCD Adapter with Full Hd Camera for Slit Lamp
Medix Beam Splitter and In-built C-Mount CCD Adapter **Model»SBS-35**For Slit Lamp, focus Controlled By Manual Ring, Superior German Optics. Excellent Work with Many Models of Topcon, Takagi...
Medix Full-Hd 21mp Camera **Model»MVIEW-300** With Build In Tf Card Recording System With HDMI And USB Output Full Hd 21 Megapixel Panasonic Cmos Image Sensor, Hdmi 1920*1080p 60Frame Output, Usb 2.0 1920*1080p 30 Frame Output, 4k Video Recording, 21 Megapixel Photos, Photo Size 4608*3456, Freezing/Defrosting Function, Electronic Zoom, Support Tf Card Storage, Maximum Support Of 64gb, The Remote Control Operation, Lens Interface-C/Cs.

OPTIONAL ACCESSORIES



Medix Applanation Tonometer

Medix Applanation Tonometer MAT-100 R Type Model (For Maximum Brand HS Type Slit Lamp) Based on the Goldman Applanation Principle.
 The goldman applanation principle is widely acclaimed as the most common and direct method of accessing IOP, the MAT-100 is made with precision machined components that are subject to stringent quality control prior, during and after manufacturing in our factory to reliability.

Slit Lamp Elbow Wood Support



Diffuser



1. HS Type Slit Lamp

2. ZEISS Type Slit Lamp

Motorised Table Available



Table Top



1. Top For One Equipment
2. Top For Two Equipment (curve)
3. Top For Two Equipment (straight)



+91 9302 778 762
+91 9111 429 222



export@mediequipbazar.com
info@mediequipbazar.com



+91 9302 778 762
+91 9111 429 222



MANUFACTURING UNIT

Plot No. 23-B, Badiyakhedi
Industrial Park Phase I,
Badiyakhedi, Sehore, M.P.,
India - 466 001



MANUFACTURING UNIT

Plot No.-40, KI Ansal
Green, Kolar Road
Bhopal-462042



MANUFACTURING UNIT

Plot No. - 79, Commercial
Shade, Near D-Mart,
Bhopal, 462042



www.mediequipbazar.com



REGISTERED OFFICE

MEX ENTERPRISES

ISO 13485 :2016 & ISO 9001 :2015 Certified Company

Plot No. 50/1B-50/2B, Rajharsh Colony,
Near CI Square Shopping Mall, Kolar Road,
Bhopal, M.P.-462042

SALES OFFICE

MEX ENTERPRISES

ISO 13485 :2016 & ISO 9001 :2015 Certified Company

Building Name - Classic's, T-1895/1,
Upper Ridge Road, Karol Bagh,
New Delhi - 110005

SALES OFFICE

MEX ENTERPRISES

ISO 13485 :2016 & ISO 9001 :2015 Certified Company

House No.-10/806, Shivanand Nagar,
Jhanda Chowk, Raipur CG-492008